

# GAMAA

gallery and museum achievement awards

---

## *2008 winners*

**On the following pages we present the award recipients from the 2008 Gallery and Museum Achievement Awards. We trust that you will be inspired by these winning entries to submit a 2009 nomination for those dedicated individuals who work with your organisation, or a worthy project or activity that your organisation has undertaken.**

**The Gallery and Museum Achievement Awards are presented by Museum & Gallery Services Queensland to honour the achievements of individuals and organisations in striving towards excellence.**

**THE 2009 GAMAA NOMINATIONS ARE NOW OPEN (closing date 10 July 2009).**

---

There are three categories for Organisation Awards:

- #1: Organisations with staff of 5 or more (full-time equivalent)
- #2: Organisations with staff of under 5 (full-time equivalent)
- #3: Organisations wholly volunteer-run

Organisations can self-nominate; they can be nominated by another organisation, including local councils; or they can be nominated by another person, including members of the general public.

Nominated activities may include projects such as exhibitions, public programs, educational initiatives, publications, events, collection management, research, sponsorship, community building. They might also include operational initiatives in administration, exhibitions, education, public programs, marketing, fund-raising, collection management or development.

There are two categories for Individual Awards:

- #1: Paid staff
- #2: Volunteer staff

Individuals must be nominated by another person.

So if you know of a worthy individual, submit a nomination now.

---

**For more information on the 2009 GAMAA, go to Museum & Gallery Services Queensland's website, [www.magsq.com.au](http://www.magsq.com.au) For assistance with nominations, contact M&GSQ on 07 3215 0820 or freecall within Queensland 1800 680433, or email [information@magsq.com.au](mailto:information@magsq.com.au)**

# GAMAA 2008



## Award Recipients of the 2008 GAMAA

Back row: Rory O'Connor (Yugambah Museum), Andrew Gill (Bundaberg Regional Council), Robert Ievers (Kronosaurus Korner), Deborah Tranter (Queensland Museum), Tim Lynch (Redcliffe City Gallery), Peter Denham (Museum of Brisbane), Sally Hinz (Dogwood Crossing @ Miles), Bruce Lentell (Rockhampton Heritage Village). Front row: Annette Turner (Logan Art Gallery), Cr Hajnal Ban (Logan City Council), Kate Hard (Cairns Regional Gallery), Shirley Eckford (Julia Creek Historical Society), Meg O'Driscoll (Friends of Ormiston House), Sally Young (representing Rhonda Brosnan, Jondaryan Woolshed).

The fifth annual presentation of the Gallery and Museum Achievement Awards was hosted by the Queensland Art Gallery at the Gallery of Modern Art, Brisbane, in October 2008.

Winners were presented with their Awards by Ms Leigh Tabrett, Deputy Director-General, Arts Queensland at this gala industry event.

Museum and Gallery Services Queensland is pleased to present the winners of the 2008 Gallery and Museum Achievement Awards.

## MUSEUM OF BRISBANE

*Remembering Goodna: Stories from a Queensland mental hospital exhibition*

**JOINT WINNER: Organisations, Staff of 7 or more**

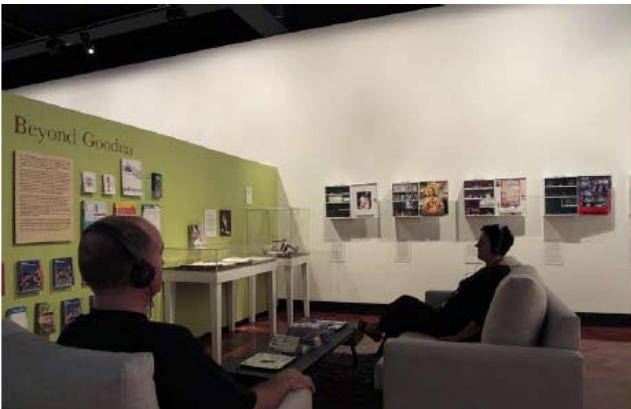
Located in the heart of Brisbane in the iconic City Hall, the Museum of Brisbane is a social history museum and visual arts gallery created to inspire others about life in Brisbane.

*Remembering Goodna: Stories from a Queensland mental hospital* presented the difficult and complex history of Queensland's oldest and largest mental hospital that was founded in 1865. The history of the hospital (colloquially referred to as Goodna) is the story of how our community deals with mental illness.

The Museum of Brisbane worked in partnership with The Park Centre for Mental Health (Queensland Health) and Professor Mark Finnane of Griffith University, an expert in the history of the hospital, to develop the exhibition. The curatorial team employed processes and principles that ensured that the history of the hospital was presented sensitively and allowed visitors to engage with it at their own comfort level. The curatorial approach favoured first-hand accounts so that the people who had lived and worked at the hospital had the opportunity to speak for themselves. The stories of patients and hospital staff were told side by side, often presenting conflicting and contradictory viewpoints.



Display from the exhibition, *Remembering Goodna: Stories from a Queensland mental hospital*, at the Museum of Brisbane.



'The Living Room', with the installation of First Aid Boxes on the right-hand wall, from the exhibition, *Remembering Goodna: Stories from a Queensland mental hospital*, at the Museum of Brisbane.

The exhibition included 'The Living Room', a space for reflection where brochures on mental illness were made available, along with contemporary personal audio stories. Also featured was an exhibition of First Aid Boxes, stripped of their medical content and used as 'canvasses' for people to share their own 'first aid' tools – the things that help them live with mental illness every day.

*Remembering Goodna* attracted 60,000 visitors, around 650 of whom left substantial written feedback on the exhibition.

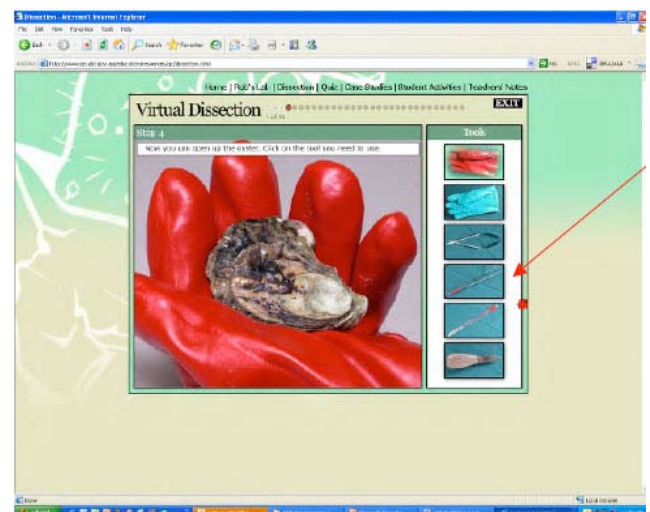
## QUEENSLAND MUSEUM Queensland Museum On-Line Learning Resources JOINT WINNER: Organisations, Staff of 7 or more

The *Queensland Museum On-Line Learning Resources* have been developed over three years by teachers-in-residence seconded to the Queensland Museum who work in partnership with museum colleagues. Its main aim is to highlight the work of museum professionals such as science and cultures and histories curators. Curatorial expertise is gleaned and interpreted in the form of physical (kits) and virtual (on-line) learning resources to capture the imagination and interest of teachers, school children and their wider community. Developing this 'virtual' audience helps to fulfil the Queensland Museum's commitment to extend the reach and impact of its services to the community.

The content of the resources are diverse; for example:

- *Wildbackyards*, three digital stories about developing urban and rural back gardens to attract Australian native flora and fauna;
- *Journey of Understanding*, digital stories that tell the tales of three refugee families in Brisbane, highlighting the challenges and experiences of leaving their homeland and settling in a new country;
- *Disease Detectives*, focusing on the work of Dr Rob Adlard, a Queensland Museum specialist in marine zoology, and the decimating impact of the QX oyster disease. An interactive DNA game and virtual dissection are the first to be developed in Australia;
- *Mangrove Challenge*, celebrating the work of Dr Steve Van Dyke, Senior Curator, Terrestrial Biodiversity and his research on the survival challenges faced by the rare water mouse and its dwindling tidal terrain.

The Queensland Museum strategic learning team engaged with a range of communities to develop the content for the learning resources, including farmers in Roma and Innisfail; a Stradbroke Island oyster farmer; and refugee communities from Sudan, Vietnam, Afghanistan, Bosnia, Iraq and the Congo.



From the Queensland Museum's on-line learning resource, *Disease Detectives*. Students have to figure out each step of the oyster dissection using appropriate tools, based on their understanding and reading of information within the website.

# GAMAA 2008

## YUGAMBEH MUSEUM, LANGUAGE AND HERITAGE RESEARCH CENTRE

### *The Drumley Walk*

**WINNER: Organisations, Staff of up to 6**

The Yugambah Museum, Language and Heritage Centre houses extensive research material specific to the Aboriginal people of the Yugambah Language region of South-East Queensland – from Beaudesert in the west, the Tweed in the south and the Logan River in the north.

*The Drumley Walk* is a major event for the Museum, providing an opportunity for the local indigenous community to tell their stories for three days over 60km, explaining legends and history at the spot where they occurred. The event attracts a broad audience, engaging people who may not normally be interested in local indigenous language but who may enjoy walking – many locals open their properties and join in the walk.

*The Drumley Walk* follows the footsteps of local hero Billy Drumley who, in the early 1900s, regularly set off on a 70km journey to check on his sister and her family. His trail led from the country centre of Beaudesert, up through the forests of the Gold Coast hinterland, and down along the Nerang River to the coastal centre of Southport. Drumley, at the age of 86, completed the walk in a day.

*The Drumley Walk* has enabled the Yugambah Museum to develop strong relationships with the local indigenous community, building community pride and instilling in young people a sense of respect for their elders and community leaders. It has also engendered strong relationships with other community stakeholders such as the Scenic Rim and Gold Coast City Councils, local MPs, Beenleigh and Beaudesert Police and local schools. In 2008, children from Mornington Island were brought to the Walk to encourage them to see south-east Queensland as a positive place to complete their high school education.



Alasdair Macintyre, *Rebuilding the Babylonian Edifice*, 2004, Gold Coast City Art Collection, from the exhibition *Blast! the influence of Manga and contemporary Japanese culture on Australian artists*.

## LOGAN ART GALLERY & REDCLIFFE CITY GALLERY

### *Blast! the influence of Manga and contemporary Japanese culture on Australian artists* exhibition

**SPECIAL COMMENDATION: Organisations, Staff of up to 6**

Redcliffe City Gallery and Logan Art Gallery are small regional public art galleries providing services and programs for their respective communities in South-East Queensland. Faced with the challenge of delivering significant exhibitions and events with limited resources, the two galleries joined forces to present a cutting edge exhibition catering to the interests of youth. *Blast! the influence of Manga and contemporary Japanese culture on Australian artists* was a special-interest exhibition designed to attract an age group that traditionally doesn't engage with art galleries on a regular basis. The combined resources of the two galleries enabled them to include a number of key works in the exhibition by significant contemporary artists from across Australia. The exhibition was shown at both venues with a range of accompanying public programs, including workshops in Manga drawing, clay figure creation and stencil-cutting. Older audiences were introduced to the themes of Manga and contemporary Japanese culture through the screening of an early episode of *Astro Boy*, a popular Japanese animé of the 1960s by Osamu Tezuka. The *Blast!* project facilitated mentoring and the sharing of skills and expertise between the staff and volunteers of the Redcliffe and Logan galleries – the success of this collaboration has led them to work together on two subsequent projects.

## **DOGWOOD CROSSING @ MILES**

*Cultural Connections* exhibition

**SPECIAL COMMENDATION: Organisations, Staff of up to 6**

The *Cultural Connections* exhibition was Dogwood Crossing @ Miles' response to the issue of local government amalgamations that immersed the community for much of 2007. The exhibition focused on the six rural shires of Murilla, Chinchilla, Tara, Wambo, Dalby and southern Taroom that were to become the Dalby Regional Council. *Cultural Connections* aimed to create the beginnings of a cultural map for the new region, highlighting its combined cultural capacity while recognising individual identities. The participating Councils provided pieces from their collections and profiles on their Shire's history. A diverse range of community cultural organisations provided objects, photos or artworks that were representative of their activities and history, as well as a profile of their role in the community.

The *Cultural Connections* exhibition played a valuable role in developing productive ongoing relationships between the new Council, Dogwood Crossing and the participating community organisations which will continue to contribute a strong and inclusive future for the region.

## **FRIENDS OF ORMISTON HOUSE**

*Bringing Culture and Heritage Alive*

**WINNER: Organisations, Volunteer Run**

Ormiston House is a heritage-listed property with colonial buildings and historically significant gardens, located in Redland City on Moreton Bay. The house was built between 1862 and 1865 by Scottish aristocrat, the Hon. Captain Louis Hope, a pioneer of Queensland's commercial sugar industry. The Friends of Ormiston House is a dedicated volunteer organisation that works to ensure that Ormiston House and its gardens continue to be a mainstay of heritage appreciation and education in the Redlands region. The Friends are responsible for a large and diverse range of public participation programs such as opening the grounds for family picnics, Devonshire teas and music events on the verandah, educational tours, as well as shore excursions for passengers from the P&O cruise terminal. Through their efforts, the Friends have increased visitation by almost 60% since 2005. They have 'drought-proofed' the gardens



Ormiston House.

in the face of increasing water restrictions and they work with numerous community groups such as the Camellia Society and TAFE horticultural students. The Friends also partner with local businesses and tourism and heritage organisations to support and sustain their activities. They open their grounds to national prestige motoring events and their annual *Music Beneath the Stars* attracted over 700 patrons in 2007. The Friends' innovations and improvements and their efforts in striving for new markets has resulted in Ormiston House becoming a viable and valuable heritage, cultural and educational attraction.

## **JULIA CREEK HISTORICAL SOCIETY INC.**

*"Opera House" Photographic Gallery*

**SPECIAL COMMENDATION: Organisations, Volunteer Run**

One of the region's oldest buildings, the Julia Creek "Opera House" has been restored as a historical gallery, showcasing photography dating back a century. Originally a dental clinic, the building served as a pottery workshop, officially opened in 1973 at the precise moment as its "sister" Opera House in Sydney. Restored and reopened in 2007 through the dedication of the Julia Creek Historical Society and the local community, the gallery now exhibits historical images dating back to 1907 and has become a popular tourist attraction.



The *Opera House* Photographic Gallery, before and after restoration.

# GAMAA 2008

## **KATE HARD**

*Cairns Regional Gallery*

**WINNER: Individuals, Paid**

Kate Hard is the Public Programs Manager at the Cairns Regional Gallery. In a period of just over two years Kate has developed public programs and educational



activities for over ninety exhibitions for the Gallery, resulting in a sizeable increase in participation numbers. Her prior experience within the education system has enabled her to develop programs that specifically meet current curriculum requirements. Kate's tailoring of gallery programs to meet Education Queensland key performance indicators, coupled with building professional relationships with educators in the region, has significantly enhanced the Gallery's standing as an education resource within the community.

Cairns Regional Gallery services a region larger than the state of Victoria. Kate has delivered programs and provided support across this large area which includes the remote and diverse communities of Cairns Tablelands, Cape York and the Torres Strait. She has shown outstanding leadership in managing the Gallery's volunteer team, casual staff team, contracted artists for specific programs, as well as overseeing Front of House and the Gallery Shop. Kate has been working on the development of a range of merchandising for the shop drawn from the Gallery's collection.

## **ANDREW GILL**

*Bundaberg Regional Council*

**SPECIAL COMMENDATION: Individuals, Paid**

Andrew Gill is Manager Cultural Activities at Bundaberg Regional Council. Andrew has demonstrated his passion, commitment and leadership in the active role he undertakes with a multitude of community groups, leading the local RADF committees, the Public Art Advisory Group, the Council Art Collection committee and the Exhibitions committee as well as serving on the local museum committee, the cultural

plan implementation committee, local festival committees, and the local arts network. Andrew has unified resources and opened the lines of communication between



many of the arts and cultural groups in the Bundaberg region. He has supported many local artists in their professional development, sharing his extensive knowledge and experience to encourage best practice in the region.

In an effort to unify the region and allay fears, Andrew and his staff facilitated a roundtable discussion on local government amalgamation. This brought together gallery professionals from the central east coast region and beyond to review, consider and discuss the processes and outcomes that galleries were undertaking pre and post-amalgamation.

## **BRUCE LENTELL**

*Rockhampton Heritage Village*

**SPECIAL COMMENDATION: Individuals, Paid**

Bruce Lentell is the Manager at the Rockhampton Heritage Village. He is dedicated to bringing new audiences to the Village and has undertaken a range of initiatives designed to increase visitation, such as nominating to host the Queensland Heritage Rally



which was attended by over 6,000 people. Bruce also supported the Village's first Ute Muster which succeeded in attracting a new audience of young adults. He is a keen tour guide of the Village and recently coordinated Lantern Tours, which proved extremely popular.

Bruce has built strong links between the Village and local community groups, supporting Red Cross events, Work for the Dole initiatives and the Multicultural Festival and often contributing many hours of unpaid work to these causes. A number of local businesses have become firm supporters of the Village as a result of Bruce's fostering of these relationships.

## ROBERT IEVERS

*Kronosaurus Korner, Richmond*

**WINNER: Individuals, Volunteer**

Robert Ievers is a Board Member and volunteer at Kronosaurus Korner in Richmond. In 1989 Robert, a local grazier, discovered arguably some of Australia's most significant dinosaur fossils – the *Richmond Pilosaur*, a near complete fossilised Marine Reptile from 100 million years ago. Three months later, Rob made a second find – *Minmi*, a small plant-eating dinosaur that proved to be one of Australia's best preserved and most complete dinosaur.



Robert subsequently pursued a vision to create a major tourist attraction for the region. His enthusiasm, persistence and commitment resulted in the development of Kronosaurus Korner, an award winning facility that attracts over 15,000 visitors a year and now includes an international audience.

Robert has instigated and managed many significant events for the region such as the People to People Ambassador Program involving over 1,000 international students; a World Harmony Day Run; and a biennial Fossil Festival. He makes the 170km round trip to volunteer his services at Kronosaurus Korner in between his official duties as Deputy Mayor of the Richmond Shire.

## RHONDA BROSNAN

*Jondaryan Woolshed*

**SPECIAL COMMENDATION: Individuals, Volunteer**

Rhonda Brosnan is a volunteer at the Jondaryan Woolshed. For more than fifteen years Rhonda has dedicated her services to the Woolshed, providing guidance, support and encouragement to the other volunteers.



She took on volunteer project management of the Hugh Tindall Shearing Collection of 500 items which led to the development of two exhibitions: *Jondaryan Run – Jewel of the Downs* in 2006 and the innovative *Australian Wool Story Trail* in 2007.

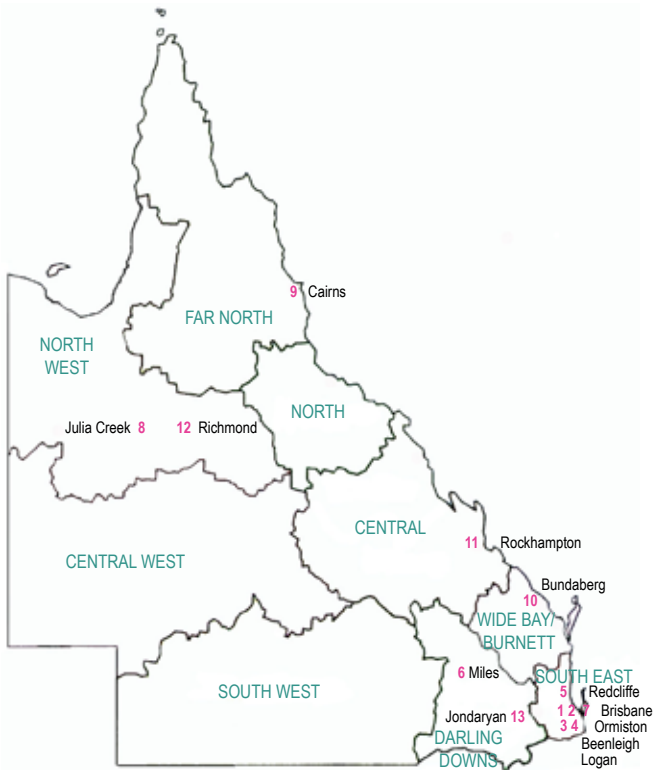
Rhonda is a strong advocate for the Woolshed and for heritage in the region, actively promoting activities and encouraging new visitors. Rhonda's commitment to improving standards saw her undertake two Museum Studies subjects in her own time, passing on her knowledge to the other volunteers.



**2008 GAMA trophies designed by Elizabeth Shaw and Nick Ashby.**

# GAMAA 2008

## WHERE TO FIND THESE AWARD-WINNING ORGANISATIONS :



1. **Museum of Brisbane**, Ground Floor, Brisbane City Hall, King George Square, Brisbane. Phone 07 3403 8888.
2. **Queensland Museum** South Bank, Corner Grey and Melbourne Streets, South Brisbane. Phone 07 3840 7555.
3. **Yugambah Museum, Language and Heritage Research Centre**, Corner Martens Street and Plantation Road, Beenleigh. Phone 07 3807 6155 or 07 3807 6229.
4. **Logan Art Gallery**, Corner Jacaranda Avenue and Wembley Road, Logan Central. Phone 07 3412 5519.
5. **Redcliffe City Gallery**, 470–476 Oxley Avenue, Redcliffe. Phone 07 3283 0415.
6. **Dogwood Crossing @ Miles**, Corner Warrego and Leichhardt Highways, Miles. Phone 07 4628 5566.
7. **Ormiston House**, 277 Wellington Street, Ormiston, Redland City. Phone 07 3286 1425.
8. **Opera House Photographic Gallery**, Julia Street, Julia Creek. Phone 07 4746 7166.
9. **Cairns Regional Gallery**, Corner Abbott and Shields Streets, Cairns. Phone 07 4046 4800.
10. **Bundaberg Regional Art Gallery**, 1 Barolin Street (Corner Quay Street), Bundaberg. Phone 07 4152 3700.
11. **Rockhampton Heritage Village**, 296 Boundary Road, Parkhurst, Rockhampton. Phone 07 4936 1026.
12. **Kronosaurus Korner**, 91–93 Goldring Street, Richmond. Phone 07 4741 3429.
13. **Jondaryan Woolshed**, 264 Evanslea Road, Jondaryan. Phone 07 4692 2229.

### 2008 GAMAA Judging Panel

- Gavin Bannerman, Oral History and Digital Storytelling Coordinator, Heritage Collections, State Library of Queensland
- Jan Brown, Coordinator, Outback Regional Gallery, Waltzing Matilda Centre, Winton
- Mary-Clare Power, Manager Marketing Alliances, Tourism Queensland
- John Waldron, Gallery Director, Arts & Heritage Manager, Caloundra Regional Art Gallery
- Vivienne Moran, Curator/Manager, Maritime Museum of Townsville

### 2008 GAMAA Advisory Committee

- Edith Cuffe, CEO, Abbey Museum of Art and Archaeology, Caboolture
- Andrew Moritz, Director, The Workshops Rail Museum, Ipswich
- Elliott Murray, Head of Design, Web & Multimedia, Queensland Art Gallery | Gallery of Modern Art
- Mary-Clare Power, Manager Marketing Alliances, Tourism Queensland
- Vicki Warden, Museum Development Officer and MDO Coordinator, Toowoomba

### MUSEUM AND GALLERY SERVICES QUEENSLAND

Level 3, 381 Brunswick Street, Fortitude Valley Qld 4006  
T: 07 3215 0820 E: [information@magsq.com.au](mailto:information@magsq.com.au)

### 2008 GAMAA Sponsors

Queensland Art Gallery  
Brian Tucker Accountant  
Brandi Projects