

A decorative green line starts from the left edge of the slide, passes through a dark green sphere with white dots, and curves upwards and then downwards to the right.

# National Collections Advisory Forum

Janine Schmidt – Member of the NCAF  
(University Librarian, University of Queensland)



# Who and what is the NCAF?

- ✦ National Collections Advisory Forum
- ✦ Established in 2002, by the Department of Communications, Information Technology and the Arts on behalf of the Cultural Ministers Council (CMC)
- ✦ Followed Key Needs Study
- ✦ Has a sunset clause

# NCAF

 Involves GLAM

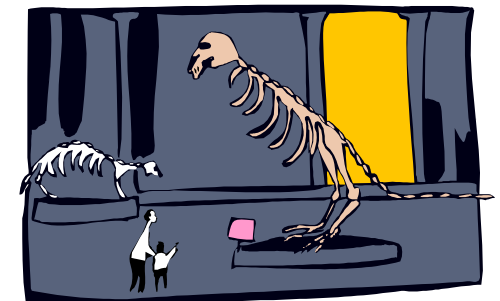


Galleries



Archives

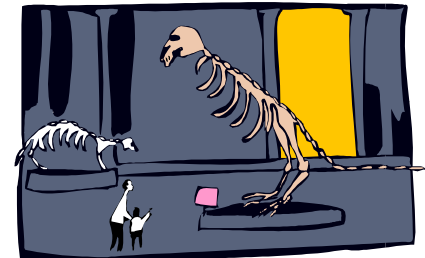
Libraries



Museums

# Why GLAM? All...

- ✦ Collect material of significance
- ✦ Conserve
- ✦ Document
- ✦ Interpret
- ✦ Store
- ✦ Exhibit
- ✦ Insure
- ✦ Seek public impact
- ✦ Use ICT



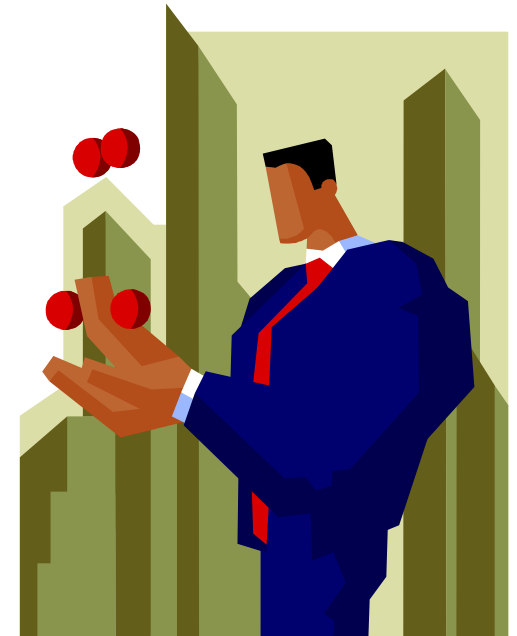
# Key Needs Study



- ✦ The Study revealed strong agreement on the need for long term vision and leadership for a distributed national collection, in order to:
  - Encourage collaboration across the library, archives, gallery and museum (GLAM) sectors;
  - Minimise duplication of programs of support by government, major institutions and industry; and
  - Achieve greater national coordination and integration of collection policy direction, programs and services.

# Key Needs Study – Priorities

1. Documentation – low
2. Conservation – high
3. Interpretation – medium
4. Professional Development – high
5. Wider Understanding – high
6. Quality/standards – low
7. Professional isolation – high
8. Quality/management – low



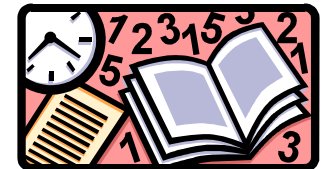
# NCAF Members



- ✦ Professor Margaret Seares, Pro Vice Chancellor (Community and Development) University of Western Australia (Chair)
- ✦ Ms Margaret Birtley, Cultural Heritage Centre for Asia and the Pacific, Deakin University
- ✦ Mr Ross Gibbs, Director, Australian Archives (fmly at Public Records Office of Victoria)
- ✦ Dr J. Patrick Green, CEO, Museum of Victoria
- ✦ Mr Brendan Hartnett, Director of Strategic Services, LgovNSW
- ✦ Ms Janine Schmidt, University Librarian, University of Queensland
- ✦ Mr Ron Radford, Director Art Gallery of SA REPLACES Mr Chris Tassell, Director, Queen Victoria Museum and Art Gallery.
- ✦ Professor David Throsby, Professor of Economics, Macquarie University, and
- ✦ Mr Gerry White, CEO, education.au limited.

# NCAF – Terms of Reference

- ✿ Prioritise the current and future needs of Australia's collections, including benchmarks and standards, and recommend strategies and programs to address these needs
- ✿ Develop strategies to identify the community value of collections and support their potential as instruments of social, cultural and economic development
- ✿ Advise on means of enhancing the coordination of support programs offered by the three tiers of Government and industry and *putting past behind and moving forward*
- ✿ Provide a report to CMC, within 12 months, upon the feasibility or otherwise of establishing a national industry body to represent the library, archives, museum and gallery sectors.





# NCAF is

- ✦ Working on a strategic framework
- ✦ Trialling projects to look at boundaries
- ✦ Seeking input
- ✦ Refining aspirations of sector and
- ✦ Will hand on baton to a national body, if one is seen as desirable



# Defining Collections

- ✿ Australia's public heritage collections, sometimes identified as a distributed national collection, are held in museums, galleries, libraries, archives, universities, specialist collections, historical societies, indigenous keeping places and community organisations
- ✿ Distributed National Collections (DNC) – term initially adopted by libraries - view the holdings as one 'national' collection
- ✿ The focus of the Forum will be on libraries, archives, galleries and museums to the extent that they hold heritage collections and it will not, for example, address other issues of each part of sector

# Defining collections



April 2003

Taking stock: revaluing museums and galleries

11

# Strategic Framework - Aims

- ✦ Encourage cross-sectoral collaboration and communication rather than competition;
- ✦ Minimising duplication of effort in relation to programs of support; and
- ✦ Achieving greater national coordination and integration of collection policy direction, programs and services in key areas (collection management and community outreach).



# Valuing Australia's Collections

✦ Identify how Australian communities value their collections and develop strategies that support collections as instruments of social, cultural and economic development

- Select target audiences
- GLAM collection domains
- Question target audiences



# National Industry Body

- ✦ NCAF to advise CMC on the feasibility of a national industry body
- ✦ Roles, goals, functions of the industry body
  - Professional development and training?
  - Leadership, coordination, communication?
  - Standards, guidelines, best practice?
  - Advocacy/lobbying: raise the profile of the GLAM sector?
- ✦ Nature, size and governance
  - Federation?
  - Membership?
  - Current institutional/professional groups?



# National Industry Body

- ✦ Consultants appointed
- ✦ Initial industry workshop April 9<sup>th</sup> – first consultation
- ✦ Document outlining options will be placed on website in a few weeks for comment
- ✦ 2<sup>nd</sup> industry workshop in June
- ✦ Draft report

